

Play Area / Equipment Operational Inspection

LLANHARRY COMMUNITY COUNCIL

Complete

Score	8 / 8 (100%)	Flagged items	0	Actions	0
--------------	--------------	----------------------	---	----------------	---

Document No. 000078

Audit Title LLANHARRY COMMUNITY COUNCIL

Client / Site Llanharry Recreation Ground

Conducted on 13.06.2024 13:01 BST

Prepared by Jerry Widdas

Location Llanharry

Personnel

Jerry Widdas

Audit

8 / 8 (100%)

GENERAL SITE DESCRIPTION

1 / 1 (100%)

Detail:

Yes

The recreation ground consists of a play area fenced by steel bow top fencing with self closing gates
 A MUGA kick about area and a youth shelter
 Both areas are accessed by Tarmac pathways
 Benches and picnic tables are located within the play area and also outside the play area boundary



Photo 1



Photo 2



Photo 3



Photo 4



Photo 5



Photo 6



Photo 7

ITEM

6 / 6 (100%)

Manufacturer identification and date of installation

Yes

MUGA area supplied by PPL date unknown
 1 X 2 seat swing supplied and installed by Urban Recreation in 2016
 1 X Traditional cradle seat swing Wicksteed Leisure
 1 X Traditional Igloo climber Wicksteed Leisure
 1 X Wheelchair roundabout supplied and installed Urban Recreation Dec 2018
 1 X Multiplayer Unit Proludic installed Feb 2022
 1 X Steel cable ride Record Play
 1 X Freestanding slide Record Play
 2 X Spring animals Fahr Industries installed Feb 2022
 1 X Teen Shelter David Ogilvie Engineering
 1 X Cantilever Swing supplied Urban Recreation 2016
 9 X Fitness Items supplied Urban Recreation October 2017
 1 X Spinning Cup supplied and installed Urban Recreation Dec 2018



Photo 8



Photo 9



Photo 10



Photo 11



Photo 12



Photo 13



Photo 14



Photo 15



Photo 16



Photo 17



Photo 18



Photo 19



Photo 20



Photo 21



Photo 22



Photo 23

Item Condition

Safe

At the time of inspection all the equipment was found to be in a safe and useable condition

Safety Surfacing

Safe

All items of play equipment are located on wet pour rubber safety surfacing



Photo 24



Photo 25

Equipment Findings

Safe

There is some wear on the toddler swing chains, monitor and plan for replacement in the future
Footplate on the air skier fitness item has severe corrosion and needs some work

There is a rubber cover missing from one of the sit up benches

The timber foot treads on the cable ride ramp are starting to deteriorate

There is a muddy hole next to the cable ride ramp

There is some graffiti on the multiplay unit panel

The litter bin by the muga is full and overflowing as the door can not be closed

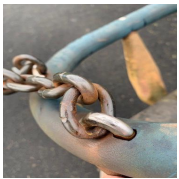


Photo 26



Photo 27



Photo 28



Photo 29



Photo 30



Photo 31

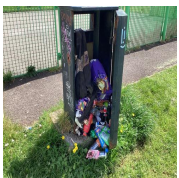


Photo 32

Safety Surfacing Findings

Safe

At the time of inspection all surfaces were found to be in a safe and useable condition although there are some areas of joint separation which should be monitored

The basket swing surface has been treated to remove grass growth

One corner of the roundabout surfacing has been subsiding over the years and continues to drop

A spray application of moss killer was applied during visit, reapply during May visit



Photo 33



Photo 34



Photo 35



Photo 36

Recommendations

Yes

monitor timber treads on cable ride ramp

Schedule to treat rubber surface in July

Replace or repair tread on air skier asap

Other comments

1 / 1 (100%)

Yes

Schedule inspection for May

Inspector Sign Off

Jerry Widdas Routine And Operational Inspector (Cert OP9635)
16.07.2024 21:02 BST

Media summary



Photo 1



Photo 2



Photo 3



Photo 4



Photo 5



Photo 6



Photo 7



Photo 8



Photo 9



Photo 10



Photo 11



Photo 12



Photo 13



Photo 14



Photo 15



Photo 16



Photo 17



Photo 18



Photo 19



Photo 20



Photo 21



Photo 22



Photo 23



Photo 24



Photo 25

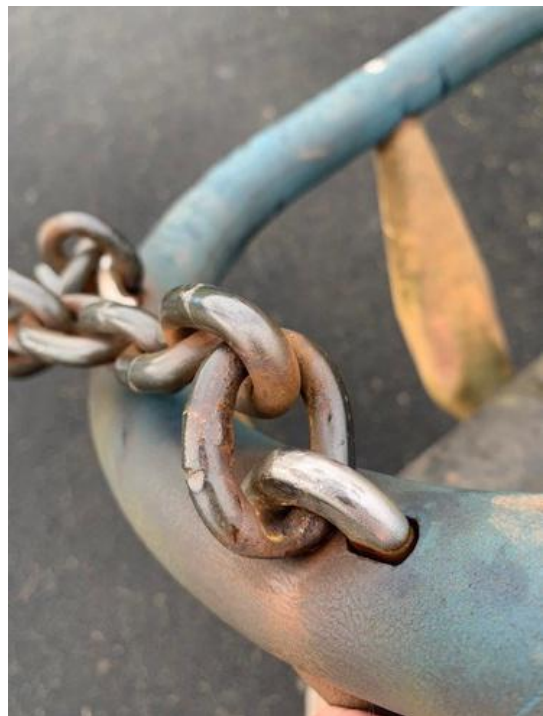


Photo 26



Photo 27



Photo 28



Photo 29



Photo 30



Photo 31



Photo 32



Photo 33



Photo 34



Photo 35



Photo 36