

# Play Area / Equipment Operational Inspection

LLANHARRY COMMUNITY COUNCIL

Complete

<b>Score</b>	7 / 8 (87.5%)	<b>Flagged items</b>	0	<b>Actions</b>	0
<b>Document No.</b>					000078
<b>Audit Title</b>					LLANHARRY COMMUNITY COUNCIL
<b>Client / Site</b>					Llanharry Recreation Ground
<b>Conducted on</b>					21.05.2026 07:30 BST
<b>Prepared by</b>					Jerry Widdas
<b>Location</b>					Llanharry
<b>Personnel</b>					
					Jerry Widdas

**Audit**

7 / 8 (87.5%)

**GENERAL SITE DESCRIPTION**

1 / 1 (100%)

**Detail:**

Yes

The recreation ground consists of a play area fenced by steel bow top fencing with self closing gates  
 A MUGA kick about area and a youth shelter  
 Both areas are accessed by Tarmac pathways  
 Benches and picnic tables are located within the play area and also outside the play area boundary



Photo 1



Photo 2



Photo 3



Photo 4



Photo 5

**ITEM**

5 / 6 (83.33%)

**Manufacturer identification and date of installation**

Yes

MUGA area supplied by PPL date unknown  
 1 X 2 seat swing supplied and installed by Urban Recreation in 2016  
 1 X Traditional cradle seat swing Wicksteed Leisure  
 1 X Traditional Igloo climber Wicksteed Leisure  
 1 X Wheelchair roundabout supplied and installed Urban Recreation Dec 2018  
 1 X Multiplayer Unit Proludic installed Feb 2022  
 1 X Steel cable ride Record Play  
 1 X Freestanding slide Record Play  
 2 X Spring animals Fahr Industries installed Feb 2022  
 1 X Teen Shelter David Ogilvie Engineering  
 1 X Cantilever Swing supplied Urban Recreation 2016  
 9 X Fitness Items supplied Urban Recreation October 2017  
 1 X Spinning Cup supplied and installed Urban Recreation Dec 2018



Photo 6



Photo 7



Photo 8



Photo 9



Photo 10



Photo 11



Photo 12



Photo 13



Photo 14



Photo 15



Photo 16



Photo 17



Photo 18



Photo 19



Photo 20



Photo 21

**Item Condition**

Safe

At the time of inspection all the equipment was found to be in a safe and useable condition

**Safety Surfacing**

Safe

All items of play equipment are located on wet pour rubber safety surfacing.

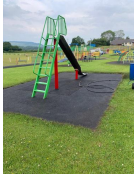


Photo 22



Photo 23



Photo 24

### Equipment Findings

At Risk

There is a muddy hole next to the cable ride ramp  
Damage has been caused to one of the MUGA panels  
There is underlying corrosion on one of the cradle seats, monitor  
The bearing on the basket swing joint has disintegrated, replace



Photo 25



Photo 26



Photo 27

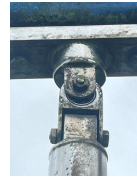


Photo 28

### Safety Surfacing Findings

Safe

At the time of inspection all surfaces were found to be in a safe and useable condition although there are some areas of joint separation which should be monitored

Moss treatment should be applied as soon as weather is dry enough April/May

One corner of the roundabout surfacing has been subsiding over the years and continues to drop monitor



Photo 29



Photo 30



Photo 31



Photo 32



Photo 33

### Recommendations

Yes

b

Other comments

1 / 1 (100%)

Yes

New cable guards, ramp treads and swing chains fitted  
Schedule inspection for 21st May



Photo 34



Photo 35



Photo 36

Inspector Sign Off

Jerry Widdas Routine And Operational Inspector (Cert OP9635)



21.05.2026 08:24 BST

---

## Media summary



Photo 1



Photo 2



Photo 3



Photo 4



Photo 5



Photo 6



Photo 7



Photo 8



Photo 9



Photo 10



Photo 11



Photo 12



Photo 13



Photo 14



Photo 15



Photo 16



Photo 17



Photo 18



Photo 19



Photo 20



Photo 21



Photo 22



Photo 23



Photo 24



Photo 25



Photo 26



Photo 27



Photo 28



Photo 29



Photo 30



Photo 31



Photo 32



Photo 33



Photo 34



Photo 35



Photo 36